

Freelander™
By Coachmen

Class C Motorhomes

Freelander™

By Coachmen



Leader to the Great Outdoors®

Freelander™

Made for Your Enjoyment



The Freelander™ 2600SO features a huge cabover bunk (86" x 57"), a dinette and refrigerator slideroom, an optional side entertainment center with 20" flatscreen television, and raised panel cabinet doors. (Shown in Basil Leaf decor and Terrace Birch cabinetry.)

The Frelander™ by Coachmen sets the standard for quality, features and amenities in a Class C motorhome. In a Frelander™, there is no need to rush or worry about reservations. There is always a meal and a comfortable bed at the end of the day. Your agenda and destination is whatever and wherever you want it to be, thanks to the convenience and affordability of the Frelander™.



The optional cabover entertainment center offers a large 24" flatscreen television, and DVD/VCR combo with plenty of space for a full-size adult to sleep. Also available is a deluxe entertainment center with a 27" flatscreen television.

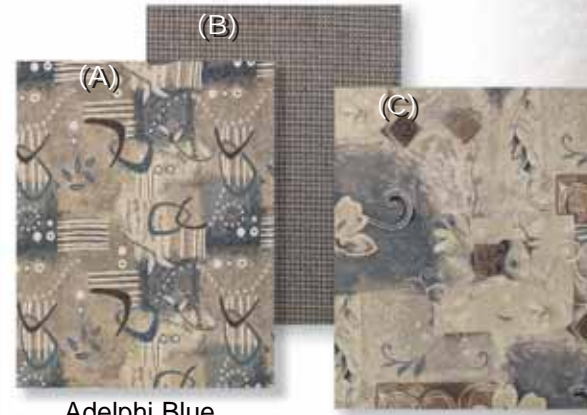
Decor Selections

Dazzling interiors feature skillfully coordinated upholstery and window treatments. Coachmen RV chooses only top-grade fabrics wear-dated as heavy-duty. These fabrics have been tested for durability beyond 15,000 double rubs (in and out action) to simulate heavy usage. An average chair in an American home is subjected to only 3,000 double rubs per year.

Fabric Key: A. Main B. Accent C. Bedspread



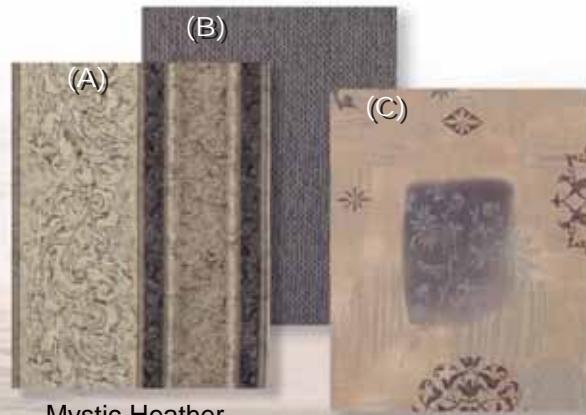
Basil Leaf



Adelphi Blue



This optional **AM/FM stereo** complete with **cassette**, **CD player**, and **built in weather band** was specifically designed for use in RV's. The large, easy to use buttons and knobs let you keep your eyes on the road rather than on the radio.



Mystic Heather

Wood Selections



Terrace Birch

Monterey Haze

Freelander™

Discover Freelander™ Class C Motorhomes by Coachmen, and see the outstanding value and safety that is designed into every coach. These affordable, value packed coaches have features galore to enhance your RV'ing experience.



The spacious interior of the Freelander™ is enhanced by the extra-tall 6'10½" ceiling height. Top it off with an array of valuable features such as the self-edged countertops, high-spout faucet, raised panel cabinet doors, and designer window treatments with optional pleated shades.



Relax in your comfortable and well-appointed Freelander™ bedroom suite. The residential cabinetry provides plenty of room for your personal effects, while the designer bedspread, and window treatments, and adjustable reading lights add an elegant touch to the area.



Features Galore



The Frelander™ 2600SO boasts a **huge rear storage bay with three large access doors**. Recessed molded storage areas provide additional covered space for some of your smaller items. One of the covers even converts to an outdoor table.



All Coachmen Class C Motorhomes feature a **raised departure angle** for greater ground clearance at the rear of the coach.



The optional **Ride Rite® Air Assist Suspension** lets you adjust your rig for a smooth level ride. Air assist helps to prevent uneven tire wear and provides for safer travel.

SAFETY FIRST



While the law requires enough seat belts to equal the number of sleeping positions, Coachmen knows that any seating location is fair game while traveling. That's why we have put **seat belts at most fixed seating locations**. All of our seat belts meet the FMVSS standards as stated by the government.

SAFETY FIRST

Ask your dealer about these Coachmen exclusive design features



By Coachmen

It doesn't have to be a weekend project figuring out how to fill, drain, or winterize your RV. Our easy to use **Water Works Utility Panel™** with large dials, simply displays how to perform each function. No lengthy explanations or wordy booklets are necessary.



By Coachmen

All Coachmen Motorhomes utilize **Duratube™ full length copper LP lines** with double flared ends to ensure a tight seal and years of corrosion free use. Coachmen builds quality for the long haul.



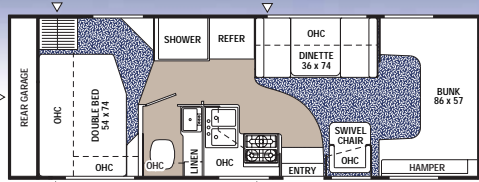
SAFETY FIRST

Coachmen's **SureLine Electrical Harness™** provides color coded wiring and specific wiring schematics for easy serviceability. High quality automotive electrical connectors and autloom protective covering make for a reliable and durable harness. The wires are grouped together and neatly tucked into the framework under the coach, safe from road debris.



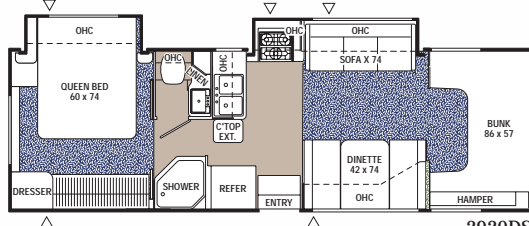
The Coachmen **Even Cool™ air conditioning system** is ducted through the crowned, vacuumbonded roof and utilizes AMOCO insulated ductwork with radiused corners to provide for maximum cooling efficiency.

Freelander™



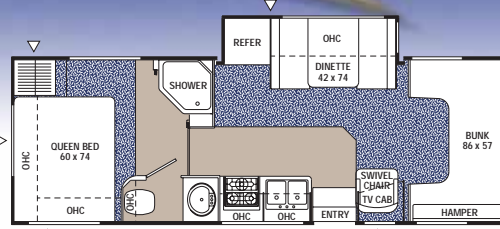
2400WB

Available with options: A, B



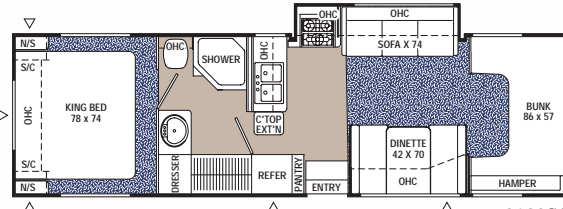
2920DS

Available with options: A, B



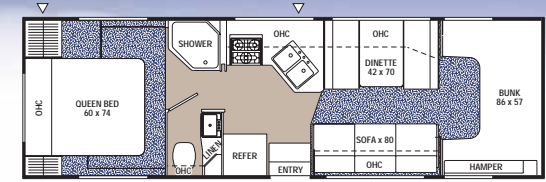
2600SO

Available with options: A, B



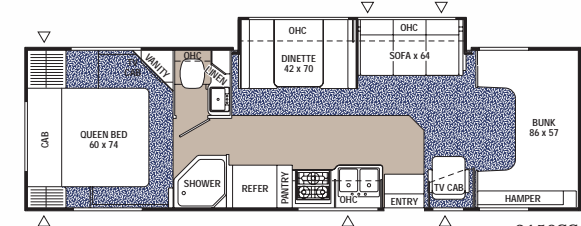
3100SO

Available with options: A, B, C



2890QB

Available with options: A, B



3150SS

Available with options: A, B

Specifications

	2400WB	2600SO	2890QB	2920DS	3100SO	3150SS
Chassis	FORD	FORD	FORD	FORD	FORD	FORD
Chassis Model	E-45	E-45	E-45	E-45	E-45	E-45
Engine Size (liter)	6.8L	6.8L	6.8L	6.8L	6.8L	6.8L
Wheel Base	170"	176"	190"	190"	208"	208"
Rear Axle Ratio	4.56	4.56	4.56	4.56	4.56	4.56
Tire Size	(1)	(1)	(1)	(1)	(1)	(1)
GVWR (Pounds)	14,050	14,050	14,050	14,050	14,050	14,050
CW (Pounds)	9,794	10,972	10,636	11,279	11,591	11,388
GAWR Front (Pounds)	4,600	4,600	4,600	4,600	4,600	4,600
GAWR Rear (Pounds)	9,450	9,450	9,450	9,450	9,450	9,450
GCWR (Pounds)	20,000	20,000	20,000	20,000	20,000	20,000
Exterior Length	26'8"	27'8"	29'6"	29'	31'	30'6"
Exterior Height*	11'2"	11'2"	11'2"	11'2"	11'2"	11'2"
Exterior Width	8'4"	8'4"	8'4"	8'4"	8'4"	8'4"
Sleeping Capacity**	5	5	6	6	6	6
Interior Width	8'	8'	8'	8'	8'	8'
Interior Height	6'10 1/2"	6'10 1/2"	6'10 1/2"	6'10 1/2"	6'10 1/2"	6'10 1/2"
Fuel Capacity (gal.)	55	55	55	55	55	55
Alternator Amps	130	130	130	130	130	130
Fresh Water Cap. (gal.)	37	31	50	30	43	40
Waste Water Cap. (gal.)	29	29	27	28	28	28
Grey Water Cap. (gal.)	28	29	27	27	27	27
Water Heater Cap. (gal.)	6	6	6	6	6	6
LP Gas Cap. (lbs.)	68	68	68	68	68	68
Furnace Rating (x1000) BTU	30	30	30	30	30	30

* Includes clearance for A/C Tire Sizes = (1) LT225/75R16E
 **Front entertainment center options delete one or two sleeping positions.

GVWR (Gross Vehicle Weight Rating): The maximum permissible weight of the unit, including the UVW plus all fluids, cargo, optional equipment and accessories. For safety and product performance, do not exceed the GVWR.

CW (Curb Weight): The weight of the unit without factory or dealer installed options, plus allowance for the weight of full fuel capacity. The "payload capacity" for all other fluids, cargo, occupants, optional equipment and accessories can be determined by subtracting the CW from the GVWR.

GAWR (Gross Axle Weight Rating): The total weight each front/rear axle, suspension and tire system is designed to carry. When loading the unit, care should be taken to balance cargo weight in consideration of the GAWRs.

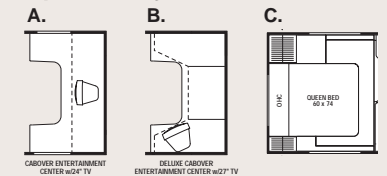
GCWR (Gross Combined Weight Rating): The maximum total weight of the loaded unit, plus a tow vehicle. This includes the weight of both the unit and tow vehicle, fuel for each, all other fluids, cargo, occupants, optional equipment and accessories.

Wider Widths: Numerous Coachmen floorplans feature the "wide body" design concept, which gives you significantly enhanced interior living space and innovative floorplans. In making your purchase decision, you should be aware that a few states restrict access on some or all roads within the state to vehicle with a maximum 9'6" width, although special road usage permits may be available. Vehicles up to 102" in width are permitted in the vast majority of states. You should confirm the road usage laws in the states of interest to you before making your purchase decision. If width is of concern to you, we invite you to consider the broad array of other Coachmen models offered in the standard 9'6" width.

IMPORTANT NOTE: All capacities are approximate, and all dimensions are nominal. Coachmen motorhomes are designed to allow for a wide variety of uses, extended trips with two people or short trips with multiple people. Accordingly, each unit allows ample room for sleeping, seating, fluids and cargo. While the customer is the beneficiary of this design, the customer also bears the responsibility to select the proper combination of passengers, cargo, load, and tow vehicle without exceeding the chassis weight capabilities. Consumer may need additional braking capacity to tow loads greater than 1,000 pounds.

Seat belts should always be worn for passenger safety. Seat belts are provided at most locations to allow convenience in selecting which seat to occupy. However, it is not intended that all seating positions equipped with a seat belt may be occupied while the vehicle is in motion, without regard to other weight factors. All Coachmen motorhomes are designed to ensure that the number of passengers allowed while the vehicle is in motion will always at least equal the stated sleeping capacity. Though extra seat belts may be provided, for your safety and the proper operation of your vehicle, limit your passengers to the number allowed by the Net Carrying Capacity of your vehicle.

Options Key:



INDICATES CARPETING

INDICATES OUTSIDE STORAGE LOCATION

All information contained in this brochure is believed to be accurate at the time of publication. However, during the model year, it may be necessary to make revisions and Coachmen reserves the right to make all such changes without notice, including changes in prices, colors, materials, equipment and specifications, as well as the addition of new models and the discontinuance of models shown in this brochure. Therefore, please consult with your Coachmen dealer and confirm the existence of any materials, design or specifications that are material to your purchase decision.

Standard Features

INTERIOR APPOINTMENTS

- Monterey Haze Cabinetry
- Residential Metal Drawer Guides
- Techwood® Drawer Sides
- Linoleum Flooring (Kitchen & Bath)
- Owner's Information Package
- Night Shades Throughout
- Radius Jalousie Windows-Safety Glass (Bedrooms)
- Radius Slider Windows-Safety Glass (Coach)
- Jack Knife Sofa (Except 2400WB)
- Booth Dinette
- Reclining Pilot & Passenger Seats

INTERIOR EQUIPMENT

- AM/FM/WB/CD and Cassette Stereo w/4 Speakers
- TV Antenna and Rotor Package
- Cable TV Jack(s) (Except 2600SO)
- Prewired for Satellite Dish
- LP Leak Alarm
- Smoke Detector
- Carbon Monoxide Detector
- Fire Extinguisher
- Phone Jack

GALLEY

- Residential Size Microwave
- 3-Burner (High Output) Range Top w/Oven
- Range Cover
- Power, Lighted Range Hood
- Double Door Refrigerator
- Freezer Shelf & Refrigerator Light
- Monitor Panel
- Pull Out Pantry (3150SS)

- Stainless Steel Kitchen Sink
- Silverware Tray

SLEEPING

- Queen Bed (2890QB, 2920DS, 3150SS)
- King Bed (3100SO)
- Corner Double Bed (2400WB)
- Corner Queen Bed (2600SO)
- Cabover Bunk
- Deluxe Innerspring Mattress-312 Coil
- Bedspread & Pillow Shams
- Privacy Drape - Lower Cab
- Accordion Privacy Door- Bedroom (Except 3100SO)
- Privacy Door - Bedroom (3100SO)
- Privacy Drape - Cabover

ELECTRICAL / HEATING / AIR CONDITIONING

- 30 Amp Power Cord
- 55 Amp Electronic Converter
- GFI Circuit
- Auxiliary Battery
- Outside 120V Receptacle
- Outside Cable TV Hookup
- Coach Battery Disconnect
- Generator Ready
- Patio Light
- Electrical Heated Holding Tanks
- 30,000 BTU E.I. Furnace
- Wall Mounted Thermostat
- 13,500 BTU Ducted Roof Air Conditioner

BATH AND WATER

- Power Bath Vent
- One-Piece ABS Tub Surround
- Glass Shower Enclosure

- 6-Gallon E.I. Water Heater
- Demand Water Pump
- Lavatory Sink
- Towel Bar
- Medicine Cabinet
- Skylight

AUTOMOTIVE / EXTERIOR

- 55-Gallon Fuel Tank
- Dual Air Bags
- Cruise Control
- Tilt Steering Wheel
- Power Windows and Locks
- Dash Air Conditioning
- Chrome Front Bumper
- Radial Tires
- Full Metal Wheel Covers
- Laminated, Floor & 2" Sidewalls
- Crowned Laminated Rubber Roof
- Roof Ladder (Except 2400WB)
- Aluminum Running Boards
- Single Entrance Step
- Rubber Entry Step Tread
- Dead Bolt Lock Entrance Door
- Warehouse Storage (Except 2920DS)
- Radius Entry Door
- Patio Awning
- Stow-N-Go™ Rear Garage Storage (2400WB)
- Rear Bumper w/Stabilizer Jacks (Except 2400WB, 2890QB)
- Emergency Start Switch
- Exterior Upgrade Mirrors
- Towing Hitch w/7-Way plug
- Spare Tire



Leader to the Great Outdoors®

Optional Features

- ☐ **Premier Package - Includes:**
 - Outside Shower
 - Power Entrance Step
 - Fantastic Three-Speed Roof Vent
 - Water Purifier
 - Dedicated Drinking Faucet
- ☐ **Terrace Birch Cabinetry**
- ☐ **Sofa w/Out Arms (2920DS, 3100SO)**
- ☐ **Front Cabover Ent. center (24" Flatscreen TV & DVD/VCR Combo)**
- ☐ **Deluxe Front Cabover Entertainment Center (27" Flatscreen TV & DVD/VCR Combo)**
- ☐ **Side Coach Entertainment Center (Roadstar TV Antenna, 20" Flatscreen TV, DVD/VCR Combo & Wireless Headphones)**
- ☐ **DVD/VCR Combination**
- ☐ **20" Flatscreen TV - Coach**
- ☐ **Queen Bed (In Place of King Bed - 3100SO)**
- ☐ **Front Cabover Window (N/A w/Cabover Entertainment Center Options)**
- ☐ **Tinted Windows**
- ☐ **3.6 KW LP Vapor Generator (Diesel Only)**
- ☐ **4.0 KW Gas Generator (Onan)**
- ☐ **4.0 KW Gas Generator (Generac)**
- ☐ **Power Entrance Step**
- ☐ **Stainless Steel Wheel Inserts**
- ☐ **Air Assist Suspension**
- ☐ **Rear Bumper With Stabilizer Jacks (2400WB, 2890QB)**
- ☐ **Painted Skirt**
- ☐ **Slide-Out Room Awning-Coach (Slide Models)**
- ☐ **Slide-Out Room Awning-Bedroom (2920DS)**
- ☐ **6.0L Diesel Engine - Ford (2400WB, 2600SO, 2890QB)**
- ☐ **CSA Upfit**

Discover the Coachmen Advantages

Service After the Sale

- **Industry Leading Buckstopper™ Warranty** – Coachmen's exclusive Buckstopper™ Limited Warranty provides one-year coverage on most parts, components and appliances. Coachmen stands behind their product and is supported by a network of over 300 service centers.
- **Two Year Structural & Major Components Manufacturer's Warranty** – Coachmen provides a two-year structural and major components manufacturer's warranty, along with a complete written Warranty Summary Guide, for your peace of mind.
- **Comprehensive Owner's Information** – For your convenience we offer published materials on key equipment and options, as well as information pertaining to the function of important components. We also offer a true **Trouble Shooting and Maintenance Guide** for the simple answers to frequently asked questions.
- **Toll Free Service Numbers** – Our toll free phone numbers provide you with direct access to a Coachmen RV Service Representative.
- **Dealer Support Tools** – Coachmen makes sure that their dealers are well equipped and trained to service your needs with: Systems Manuals, PDI Manuals, Electronic Parts Catalogs, Coach-Link® "On-Line" Electronic Dealer Communication System and continual service training.
- **Service Support Center Website** – Coachmen provides you access to key information 24-hours a day through the Internet. On-line you can find a Service Dealer Locator, Maintenance Information, Trouble Shooting Information, Product Warranty Information, Customer "E-Assistance", Frequently Asked Questions (FAQ's) and Publications ordering, dating back to 1972 models.
- **Priority Parts Ordering** – Coachmen provides a program for overnight parts shipment in critical repair situations.



Coachmen Caravan Camping Club™



Coachmen Caravan Camping Club is your ticket to making friends for life. Share old stories and make new, in the company of fellow Coachmen Caravan members.

With the purchase of a Coachmen RV, you are invited to join one of the nation's largest manufacturer sponsored RV clubs with a FREE first year membership. As part of the Coachmen Caravan family, you will receive incredible membership benefits that will help to ensure your safety and enjoyment throughout your RV experiences. Enjoy your Coachmen RV more with the Coachmen Caravan Camping Club.



Leader to the Great Outdoors™

Visit our website at: www.coachmenrv.com

Coachmen Recreational Vehicle Company, LLC
P.O. Box 30, Middlebury, IN 46540 • P.O. Box 948, Fitzgerald, GA 31750

©2004 Coachmen Recreational Vehicle Company, LLC All rights reserved. Litho in USA 11/04

