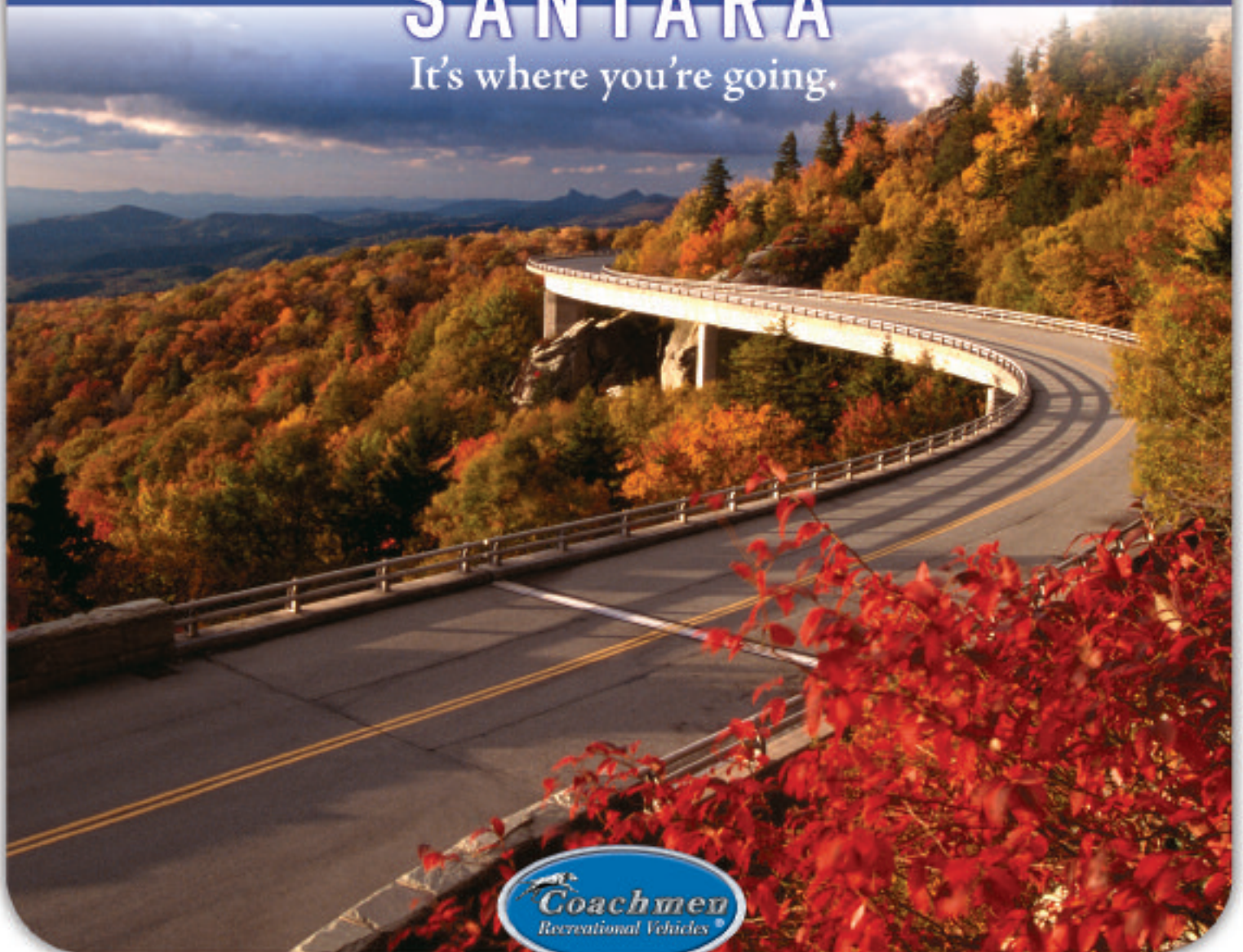


SANTARA® CLASS C MOTORHOMES BY COACHMEN



SANTARA®
It's where you're going.



Leader to the Great Outdoors®

SANTARA®

CLASS C MOTORHOMES BY COACHMEN

It's where you're going.

Vacation travel is a grand adventure in the Santara® Class C by Coachmen. Enjoy the ultimate comfort as you tour the great outdoors.

With Coachmen RV, it's not just about where you are going...it's about how your journey unfolds...the adventure of your lifetime and the new discoveries you make along the way.

Wherever you're going, Santara® takes you there in style.



◀ Santara's well designed kitchen provides you with modern conveniences including solid surface countertops with an integrated sink, a kitchen faucet with pull out sprayer, plus a dedicated faucet for purified drinking water.



SAFETY FIRST

▲ This AM/FM stereo complete with cassette, CD player and built-in weather band was specifically designed for use in RV's. The large, easy to use buttons and knobs let you keep your eyes on the road rather than on the radio.



WOOD SELECTIONS

Brazilian Cherry



Terrace Birch



DECOR SELECTIONS



Chablis Delight



B



Cinnabar Sand



B

FABRIC KEY:

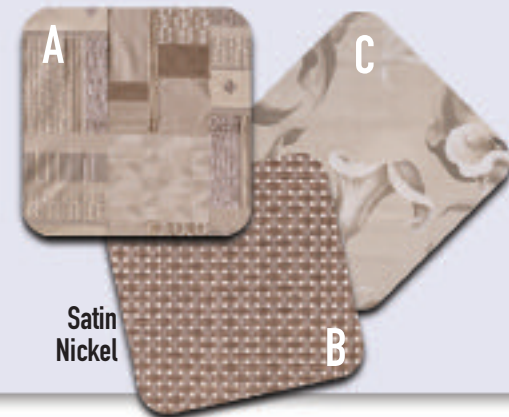


C



Step up to Santara®, the flagship of the Coachmen Class C line. Luxurious amenities abound in this stately motorhome designed for ultimate comfort as you tour the great outdoors. Overhead entertainment centers are available with your choice of a 24" or 27" flat screen television. The Santara also features solid surface kitchen countertops, deluxe lighting package, ultra leather furniture (option) and gorgeous hardwood appointments throughout.

A. Main • B. Accent • C. Bedspread



The optional deluxe entertainment center provides a class leading 27" flatscreen television with plenty of additional overhead storage space.



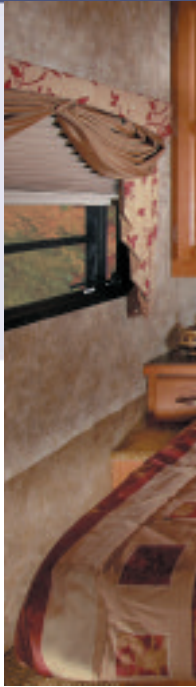


Jalousie bedroom windows tilt out design allow them to be opened for ventilation even when the weather outside is less than favorable. Just because the rain keeps you inside, doesn't mean that you can't enjoy fresh outside air.

SANTARA[®]

CLASS C MOTORHOMES BY COACHMEN

1. The Santara boasts bus style baggage doors with a spacious warehouse storage bay for outstanding storage capacity. (Most models)
2. Commonly used switches and gauges are conveniently designed into one easy to use panel. The centrally located command center includes monitor panel, generator panel, water pump switch and water heater switch.
3. This well equipped exterior entertainment center option livens up a tailgating party or gives you the freedom to relax to the sounds of your favorite music outside. Features include an AM/FM CD stereo, 2 marine grade speakers, 12V input, and a co-axial jack.
4. The optional variable speed Fantastic Fan[™] is quiet, yet powerful enough to create ample air circulation throughout the coach.
5. The optional Air Assist Suspension lets you adjust your rig for a smooth level ride. Air Assist helps to prevent uneven tire wear and provides for safer travel.



ASK YOUR DEALER ABOUT THESE COACHMEN EXCLUSIVE DESIGN FEATURES



All Coachmen products utilize Duratube[™] full length copper LP lines with double flared ends to ensure a tight seal and years of corrosion free use. Quality for the long haul... Coachmen.



Coachmen's SureLine[™] Electrical Harness provides color coded wiring and specific wiring schematics for easy serviceability. High quality automotive electrical connectors and autoloom protective covering make for a reliable and durable harness. The wires are grouped together and neatly tucked into the framework under the coach, safe from road debris.



It doesn't have to be a weekend project figuring out how to fill, drain or winterize your RV. Our easy to use Water Works[™] Utility Panel with large dials, simply displays how to perform each function. No lengthy explanations or wordy booklet are necessary.



The Coachmen exclusive No-Mess[™] termination system is an easy to swivel boom arm that provides a convenient storage location for the termination hose. Your storage bay stays cleaner and the hose can remain connected after use.

Coachmen's Even Cool[™] air conditioning system is ducted through the crowned roof and utilizes AMOCO insulated ductwork with radiused corners to provide for maximum cooling efficiency.





◀ Santara's bedroom suite takes comfort and convenience to a whole new level. Adorned with a designer headboard, quilted bedspread, coordinating pillow shams, and designer window treatments... the Santara bedroom is your sanctuary for a great night's sleep...



▶ Start the day off right. The modern bath and vanity area provides a residential style glass shower enclosure, easy to clean vinyl flooring, upgraded faucet, and an overhead medicine cabinet with vanity lights.



Spacious slideout floorplans enhance your interior living space at the touch of a button. Upscale features are also found throughout such as the hardwood raised panel cabinet doors, high end window treatments and decors, day/night shades, soft touch ceiling, and ultra leather furniture option.

SANTARA[®]

STANDARD FEATURES

INTERIOR APPOINTMENTS

- Terrace Birch Cabinetry
- Raised Panel Hardwood Cabinet Doors Throughout
- Directional Reading Lights Above Sofa
- Deluxe Interior Light Package
- Residential Metal Drawer Guides
- TechWood[®] Drawer Sides
- Carpet with Pad-Living & Bedroom
- Linoleum Flooring - Kitchen & Bath
- Vinyl Soft Touch Ceiling
- Day/Night Shades - Coach
- Night Shades - Bedroom
- Slider Windows - Coach (Safety Glass)
- Jalousie Windows - Bedroom (Safety Glass)
- Booth Dinette w/Solid Surface Table
- Jack Knife Sofa
- Leather Pilot & Passenger Seats
- Laundry Hamper (316KS)

EQUIPMENT

- Deluxe AM/FM Stereo w/CD, Cassette and Weather Band
- Outside Entertainment Center w/CD Stereo and Two Speakers
- Cabover Entertainment Center w/24" Flatscreen TV and DVD/VCR Combo

- Pre-wired For Satellite Dish
- Roadstar TV Antenna
- Cable TV Jacks - Coach & Bedroom
- Phone Jack
- LP Leak Alarm
- Smoke Detector
- Carbon Monoxide Detector
- Fire Extinguisher

GALLEY

- Residential Size Microwave
- Solid Surface Kitchen Countertops
- Water Purifier⁽¹⁾
- Dedicated Drinking Water Faucet⁽¹⁾
- 3-Burner (High Output) Range w/Oven
- Power/Lighted Range Hood
- Range Cover
- Double Door Refrigerator
- Double Bowl Kitchen Sink
- Cutting Board Sink Cover(s)
- Trash Can

SLEEPING

- Queen Bed
- Cabover Bunk
- Deluxe Innerspring Mattress - 312 Coil
- Bedspread & Pillow Shams
- Accordion Privacy Door - Bedroom
- Privacy Drape - Lower Cab
- Privacy Drape - Cabover

BATH AND WATER

- Power Bath Vent
- Pump Switch at Termination
- Pump Switch Near Toilet
- 6-Gallon Gas/Electric E.I. Water Heater
- Skylight in Shower
- One-Piece ABS Tub Surround
- Glass Shower Door
- Demand Water Pump
- Medicine Cabinet
- Towel Bars
- Foot Pedal Flush Toilet
- Solid Surface Lavatory Countertop w/Integrated Sink

ELECTRICAL/HEATING/AC

- 30 Amp. Power Cord
- 55 Amp. Electronic Converter
- GFI Circuit
- Outside 120V Receptacle
- Battery Disconnect
- Patio Light
- Lighted Exterior Storage Compartment
- 30,000 BTU E.I. Furnace
- Wall Mounted Thermostat
- 15,000 BTU Ducted Roof A/C
- Dual Coach Battery Tray
- Auxiliary Battery
- 4.0 KW Onan Generator
- Command Center (Includes Monitor Panel, Generator Panel, Water Pump Switch, Water Heater Switch)
- Dimmer Light Switch - Coach

AUTOMOTIVE/EXTERIOR

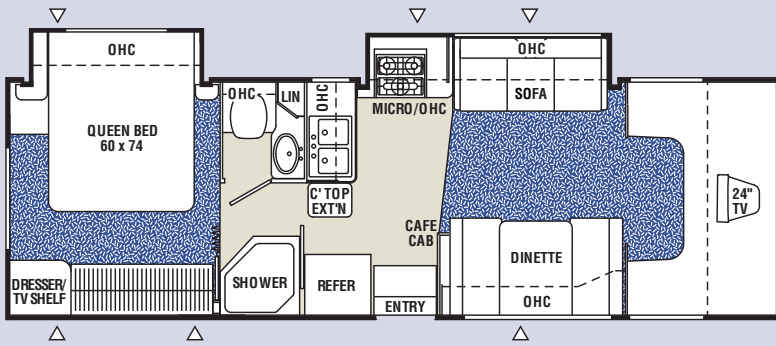
- 55-Gallon Fuel Tank
- Dual Air Bags
- Tilt Wheel/Cruise Control
- Dash Air Conditioning
- Power Windows and Locks
- Emergency Start Switch
- Chrome Front Bumper
- Radial Tires
- Spare Tire Kit
- Basement Floor Design
- Laminated 2" Sidewalls
- Laminated Floor
- Crowned, Laminated TPO Roof
- Stainless Steel Wheel Liners
- Air Assist Suspension
- Towing Hitch
- Fiberglass Running Boards
- Roof Ladder
- Rubber Entry Step Tread
- Aluminum Bus Style Baggage Doors
- Dead Bolt Entrance Door Lock
- Warehouse Storage (316KS)
- Power Entrance Step
- Slideroom Awning(s)
- Awning
- Painted Skirt
- Wood Dash Trim
- Security 'Flood' Light (DS)
- Store Rite[™] Forward Storage Compartments
- Remote/Heated Exterior Mirrors
- Owner's Information Package

Note: (1) Not Available on Models Shipped to Canada

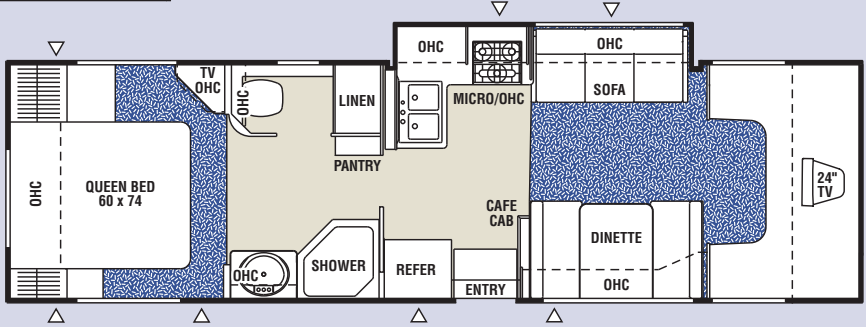
OPTIONAL EQUIPMENT

- Brazilian Cherry Cabinetry
- Ultra Leather Furniture
- Fantastic Three-Speed Roof Vent
- Deluxe Front Cabover Entertainment Center w/27" Flatscreen TV & DVD/VCR Combo
- Home Theatre System w/DVD and 6 speaker Surround Sound
- Rear Vision Camera
- Convection Microwave & 3-Burner Cooktop⁽¹⁾ (IPO Range w/Oven)
- CSA Upfit

FLOORPLANS

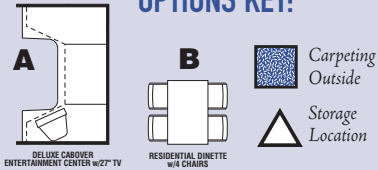


293DS Available with option: A



316KS Available with options: A, B

OPTIONS KEY:



SPECIFICATIONS

	293DS	316KS
Chassis	FORD	FORD
Chassis Model	E-45	E-45
Engine Size (liter)	6.8L	6.8L
Wheel Base	190"	208"
Rear Axle Ratio	4.56	4.56
Tire size	(1)	(1)
GVWR (pounds)	14,050	14,050
CW (pounds)	12,029	12,187
GAWR Front (pounds)	4,600	4,600
GAWR Rear (pounds)	9,450	9,450
GCWR (pounds)	20,000	20,000
Exterior Length	29'	31' 6"
Exterior Clearance Height*	11' 2"	11' 2"
Exterior Width	8' 4"	8' 4"
Sleeping Capacity**	5	5
Interior Width	8'	8'
Interior Height	6' 6"	6' 6"
Fuel Capacity (gal.)	55	55
Alternator Amps	130	130
Fresh Water Capacity (gal.)	30	40
Waste Water Capacity (gal.)	35	35
Grey Water Capacity (gal.)	33	33
Water Heater Capacity	6	6
LP Gas Capacity (lb.)	85	85
Furnace Rating (x 1,000) BTU	30	30

* Includes Roof Air Conditioner

Tire Sizes = (1) LT225/75R16E

** Deluxe cabover entertainment center option deletes 1 sleeping position

All information contained in this brochure is believed to be accurate at the time of publication. However, during the model year, it may be necessary to make revisions and Coachmen reserves the right to make all such changes without notice, including changes in prices, colors, materials, equipment and specifications, as well as the addition of new models and the discontinuance of models shown in this brochure. Therefore, please consult with your Coachmen dealer and confirm the existence of any materials, design or specifications that are material to your purchase decision.

GVWR (Gross Vehicle Weight Rating): The maximum permissible weight of the unit, including the UVW plus all fluids, cargo, optional equipment and accessories. For safety and product performance, do not exceed the GVWR.

CW (Curb Weight): The weight of the unit without factory or dealer installed options, plus allowance for the weight of full fuel capacity. The "payload capacity" for all other fluids, cargo, occupants, optional equipment and accessories can be determined by subtracting the CW from the GVWR.

GAWR (Gross Axle Weight Rating): The total weight each front/rear axle, suspension and tire system is designed to carry. When loading the unit, care should be taken to balance cargo weight in consideration of the GAWRs.

GCWR (Gross Combined Weight Rating): The maximum total weight of the loaded unit, plus a tow vehicle. This includes the weight of both the unit and tow vehicle, fuel for each, all other fluids, cargo, occupants, optional equipment and accessories.

Wider Widths: Numerous Coachmen floorplans feature the "wide body" design concept, which gives you significantly enhanced interior living space and innovative floorplans.

In making your purchase decision, you should be aware that a few states restrict access on some or all roads within the state to vehicles with a maximum 96" width, although special road usage permits may be available. Vehicles up to 102" in width are permitted in the vast majority of states. You should confirm the road usage laws in the states of interest to you before making your purchase decision. If width is of concern to you, we invite you to consider the broad array of other Coachmen models offered in the standard 96" width.

IMPORTANT NOTE: All capacities are approximate and all dimensions are nominal. Coachmen motorhomes are designed to allow for a wide variety of uses, extended trips with two people or short trips with multiple people. Accordingly, each unit allows ample room for sleeping, seating, fluids and cargo. While the customer is the beneficiary of this design, the customer also bears the responsibility to select the proper combination of passengers, cargo, load and tow vehicle without exceeding the chassis weight capabilities. Consumer may need additional braking capacity to tow loads greater than 1000 pounds.

Seat belts should always be worn for passenger safety. Seat belts are provided at most locations to allow convenience in selecting which seat to occupy. However, it is not intended that all seating positions equipped with a seat belt may be occupied while the vehicle is in motion, without regard to other weight factors.

All Coachmen motorhomes are designed to ensure that the number of passengers allowed while the vehicle is in motion will always at least equal the stated sleeping capacity. Though extra seat belts may be provided, for your safety and the proper operation of your vehicle, limit your passengers to the number allowed by the Net Carrying Capacity of your vehicle.

SANTARA®

CLASS C MOTORHOMES BY COACHMEN

You set the pace for a real vacation get away with Santara. Take a spontaneous exit from the ordinary. Discover the freedom of the open road with Coachmen quality, luxury and style all along the way.



DISCOVER THE COACHMEN ADVANTAGES

SERVICE AFTER THE SALE

INDUSTRY LEADING BUCKSTOPPER™ WARRANTY –

Coachmen's exclusive Buckstopper™ Limited Warranty provides one-year coverage on most parts, components and appliances. Coachmen stands behind their product and is supported by a network of over 300 service centers.

TWO YEAR STRUCTURAL & MAJOR COMPONENTS MANUFACTURER'S WARRANTY –

Coachmen provides a two-year structural and major components manufacturer's warranty, along with a complete written Warranty Summary Guide, for your peace of mind.

COMPREHENSIVE OWNER'S INFORMATION –

For your convenience we offer published materials on key equipment and options, as well as information pertaining to the function of important components. We also offer a true Trouble Shooting and Maintenance Guide for the simple answers to frequently asked questions.



TOLL FREE SERVICE NUMBERS –

Our toll free phone numbers provide you with direct access to a Coachmen RV Service Representative.

DEALER SUPPORT TOOLS –

Coachmen makes sure that their dealers are well equipped and trained to service your needs with: Systems Manuals, PDI Manuals, Electronic Parts Catalogs, Coach-Link™ "On-Line" Electronic Dealer Communication System and continual service training.

SERVICE SUPPORT CENTER WEB SITE –

Coachmen provides you access to key information 24-hours a day through the Internet. On-line you can find a Service Dealer Locator, Maintenance Information, Trouble Shooting Information, Product Warranty Information, Customer "E-Assistance", Frequently Asked Questions (FAQ's) and Publications ordering, dating back to 1972 models.

PRIORITY PARTS ORDERING –

Coachmen provides a program for overnight parts shipment in critical repair situations.

COACHMEN CARAVAN CAMPING CLUB™

Coachmen Caravan Camping Club is your ticket to making friends for life. Share old stories and make new, in the company of fellow Coachmen Caravan members. With the purchase of a Coachmen RV, you are invited to join one of the nation's largest manufacturer sponsored RV clubs with a FREE 1st year membership.



As part of the Coachmen Caravan family, you will receive incredible membership benefits that will help to ensure your safety and enjoyment throughout your RV experiences. Enjoy your Coachmen RV more with the Coachmen Caravan Camping Club.



Leader to the Great Outdoors®

Coachmen Recreational Vehicle Company, LLC ■ P.O. Box 30, Middlebury, IN 46540 ■ P.O. Box 948, Fitzgerald, GA 31750

Visit our website at: www.coachmenrv.com

©2005 Coachmen Recreational Vehicle Company, LLC - All rights reserved. Litho in USA 11/05

